



Summary

1

1

What We've Covered



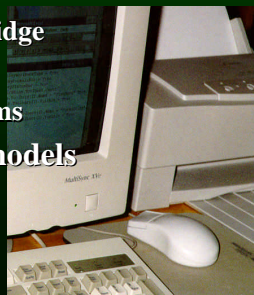
In the past
three days

2

How to Get Started



- Define elements, states, and actions
- Set up the bridge database
 - List the elements on each bridge
 - Computer systems
 - Integration with other systems
- Develop expert judgment models
 - Deterioration
 - Costs



3

3

How to Build Bridge Programs

- Inspect bridges
- Develop network-level policies
 - Optimization
- Generate an initial project list
 - Prioritization
 - Simulation
- Plan projects



4

4

How to Get the Best Results

- Understand the key definitions
 - Costs and benefits
- Monitor data quality
 - Sensitivity analysis
- Maintain and improve the models
 - Recording of work accomplishments
 - Updating procedures



5

5

What's Left

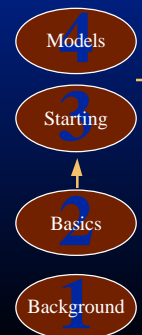
Getting Started

Building a Bridge

Results

Day 1

Day 2



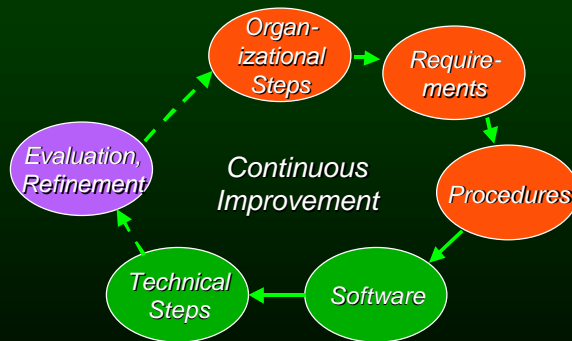
Implementation
 Sources
Pontis user network
 Future of bridge management
 Local participation
 Discussion

6

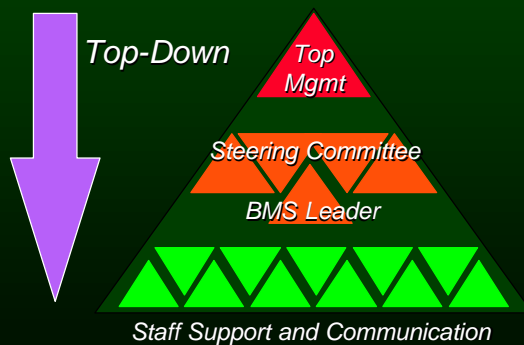
Implementation



Implementation Strategy



Organizational Strategy



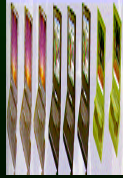
Technical Implementation Steps

- **Installation**

- Hardware
- Software
- Training

- **Model Preparation**

- Deterioration
- Costs



- **Database setup**

- Bridge inventory
- Roadway data
- Element data

- **Inspections**

- Training
- Full cycle needed

10

Sources of More Information



11

Further Training

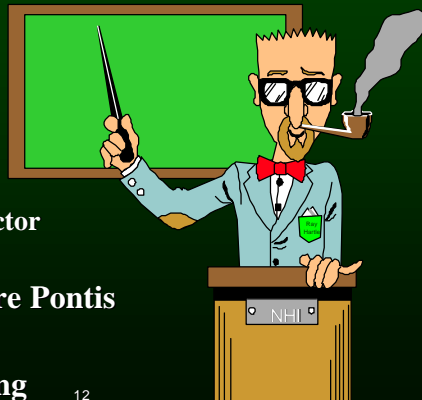
- **NHI Courses**

- Bridge inspector training

- **AASHTOWare Pontis**

- Service units

- **Special training**

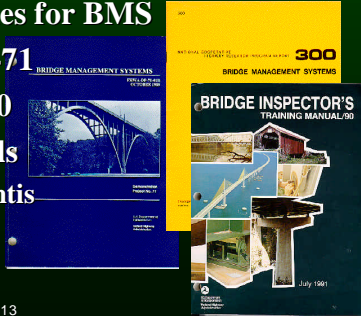


12

12

Further Documentation

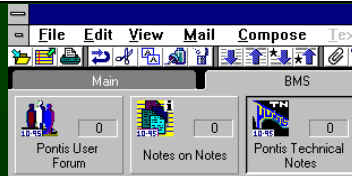
- Bridge Inspector's Training Manual
- AASHTO Guidelines for BMS
- FHWA Report DP-71
- NCHRP Report 300
- BMS Users Manuals
 - AASHTOWare Pontis
 - NCHRP Bridgit



13

13

Lotus Notes



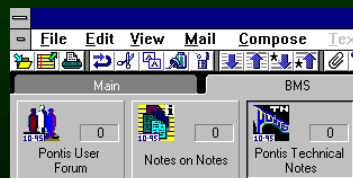
Service provided to Pontis licensees

- Pontis User Forum
 - Free-form discussion of users' issues
- Notes on Notes
 - Help with the Notes software itself
- Pontis Technical Notes
 - Software tips and updates

14

14

Lotus Notes Demonstration



15

15



16

16



Future of Bridge Management

17

17

Major Unsolved Issues

- Fatigue and scour
 - How it develops
 - Cost and effectiveness of remediation
 - Preventive measures
- Management of structurally deficient bridges



18

18

New Data Collection Equipment

- Wrist-top computers
- Global positioning system
- Deck chloride sensors
- Strain sensors
- Scour hole sensors



19

19

Complexity of Cost Estimation

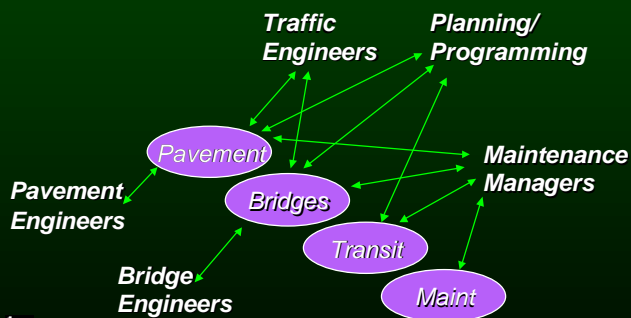
- Contract vs. Force Account
- Fixed vs. Variable
- Project vs. Network-Level
- Type of Work
- Level of Detail of Accomplishment Data Collection



20

20

Effect of Management System Integration



21

21

Team Decision-Making Support

> **Out:**

- > Military decision-making
- > Single-criterion choices
- > Primacy of experts

> **In:**

- > Consensus decision-making
- > Multiple stakeholders
- > Complex tradeoffs

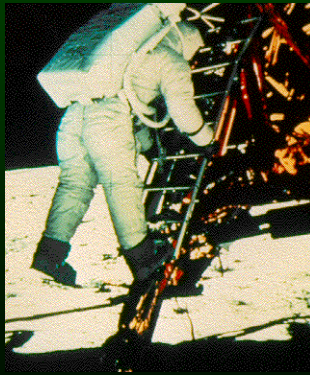


22

22

Improving BMS to Support Group Decision Making

- > Threaded unstructured discussions
- > Widespread access with security
- > Flexible generation of performance measures



23

23

Making BMS Useful to Locals



- > Two-way discussions
- > Access to technical support
- > Integration of management systems
- > Simple, quick

24

24

Discussion



**Your own state's BMS
implementation plans**

25

25

A photograph of a large, steel truss bridge spanning a wide body of water. The bridge has a large section that is raised, likely for a ship to pass. The sky is overcast with some clouds. The text "Thank you!" is overlaid in white, serif font at the bottom of the image.

Thank you!

26