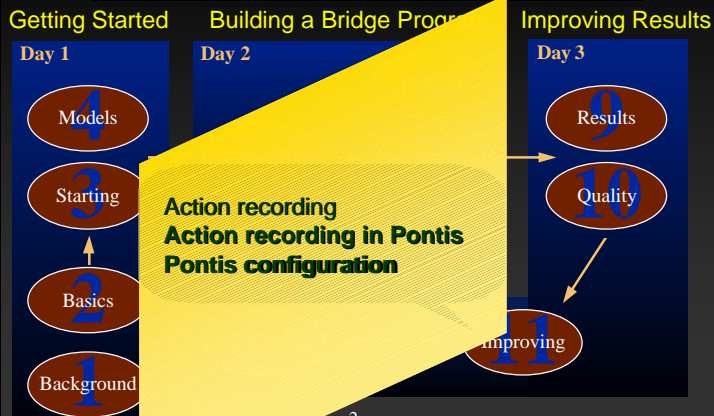


Maintaining and Improving BMS Models



1

What We'll Cover



2

ACTION!

Action Recording



Improving Models
Tracking Accomplishments

3

Why Record Actions



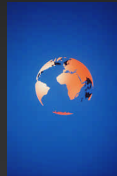
- Make Deterioration and Cost Models More Realistic
- Find Out Whether Programmed Work Was Actually Done
- Monitor the Effectiveness of Policies

4

4

Work Recording Methods

- Directly into the BMS
- Via connected systems
 - Maintenance Management Systems
 - Contract Management Systems
- Via electronic data gathering
 - Global Positioning System
 - Wireless modems



5

5

Maintenance Work Orders

Key Issues:

- Which Bridges Were Done
- Type and Quantity of Work
- Cost of Work



6

6

Contracts

Key Issues

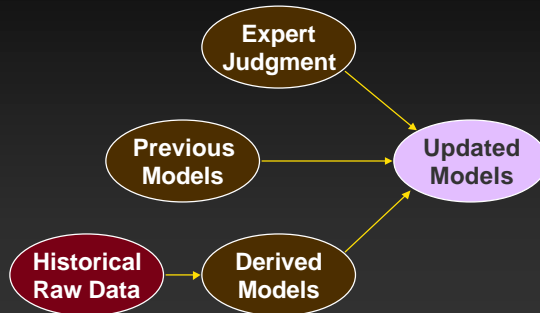
- Direct and Indirect Costs
- Project Close-Out Procedures
- Effect of Market Conditions



7

7

Model Updating



8

8

Pontis Action Log

Bridge ID	Feature Intersected	Dist	Cnty	Route
014002000100	PARKER CREEK	02	01	00020
014002000200	CALHOUN CREEK	02	001	00020
014002000300	PARK CREEK	02	01	00020
014002000400	CHICKASAW CREEK	02	01	00020
014002000500	HOGSKIN CREEK	02	01	00020

9

9

Required Fields

Pontis for Windows - Version 3.1B2
 File Edit View Tools Window Help
 Action Recording - New
 Bridge: 014002805100 Metric E
 1 Past Project 2 Func. Improvements 3 Pres. Actions
 Structure: 014002805100
 Date Done: 1/1/01
 Action: Do Nothing
 Project ID:
 Total Cost (\$): Not for Updating
 Direct (\$):
 Indirect Costs (\$):
 Land:
 Notes:

**Required Fields
 (all others optional)**

10

10

Pontis Configuration Module

Pontis For Windows R3.0a
 File Edit Tools Window Help
 Configuration
 Definitions Actions Options
 User Administration Database Setup Parameter

Table Name	Field Name	Value	Short Label	Parameter
actypdfs	atypcat	0	Do Nothing	Do N
appraise	aendrating	1	Replacement	Repl
appraise	appralign	2	Improvement	Impro
appraise	arairatin	3	Rehabilitation	Reha
appraise	deckgeom	4	Maint&Repair	Maint

11

11

Next: Summary



12

12