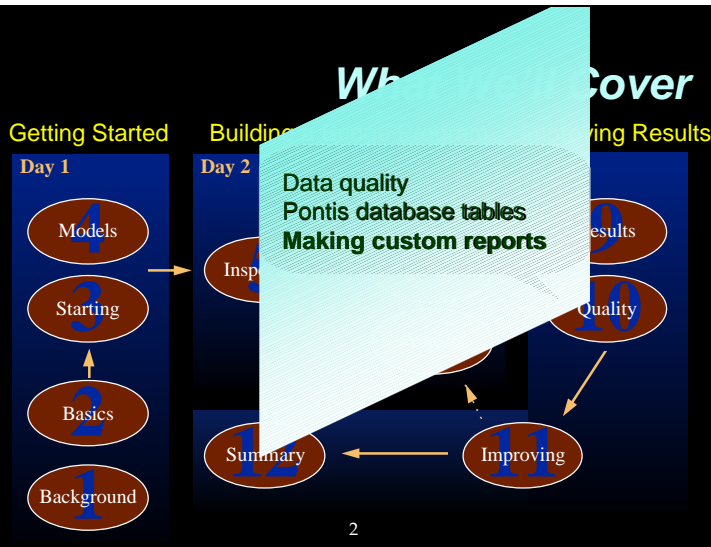


Data Quality and Sensitivity



1

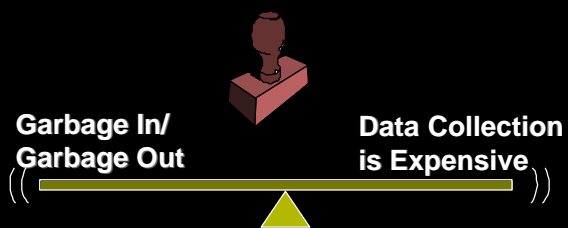
1



2

2

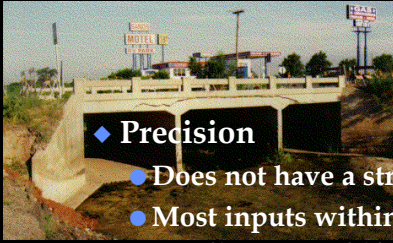
Data Quality



3

3

Network-Level Data Quality



◆ Precision

- Does not have a strong effect
- Most inputs within 25%
 - ◆ Failure costs within 50%

◆ Accuracy

- Avoid bias in estimates
- Expand and compare with program totals

4

4

Project-Level Data Quality



◆ Precision

- Requires more analysis
- Most inputs within 10%

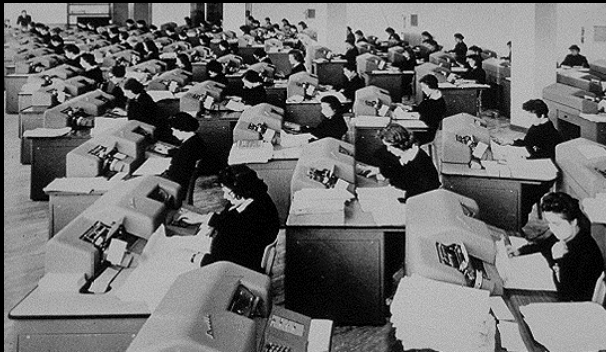
◆ Accuracy

- Avoid bias by monitoring inspection and estimation procedures

5

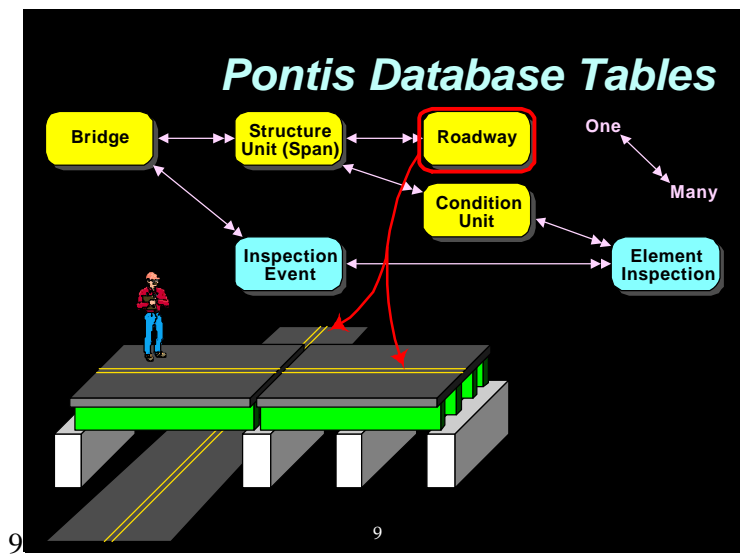
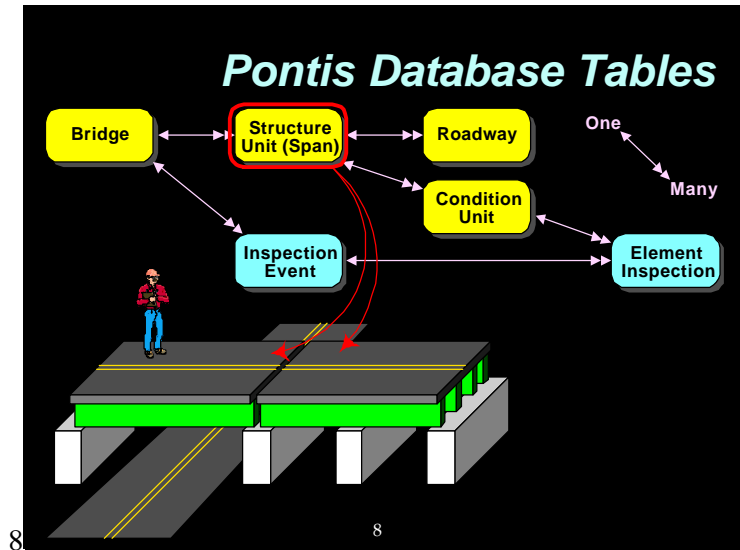
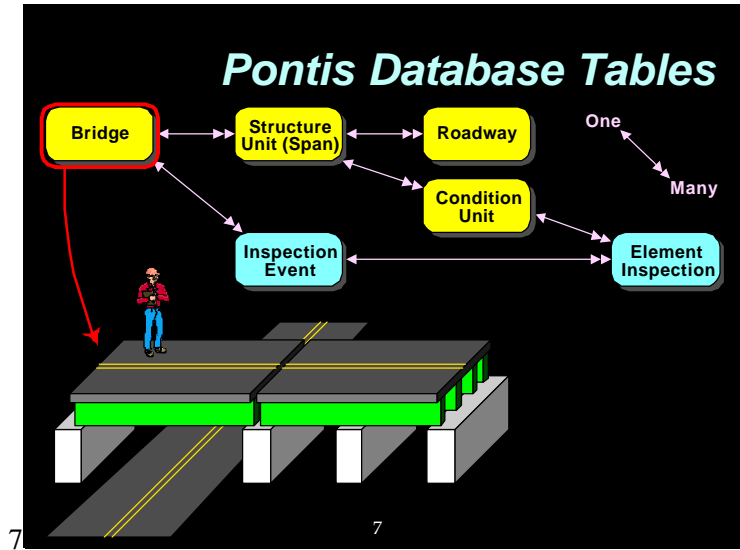
5

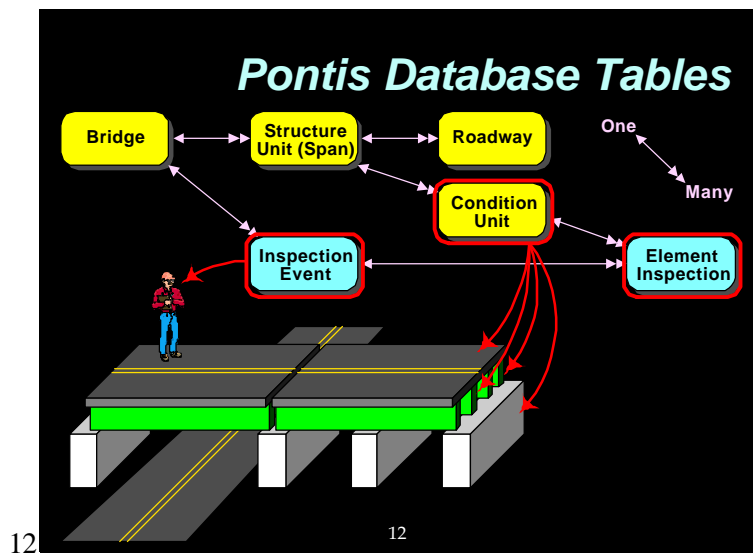
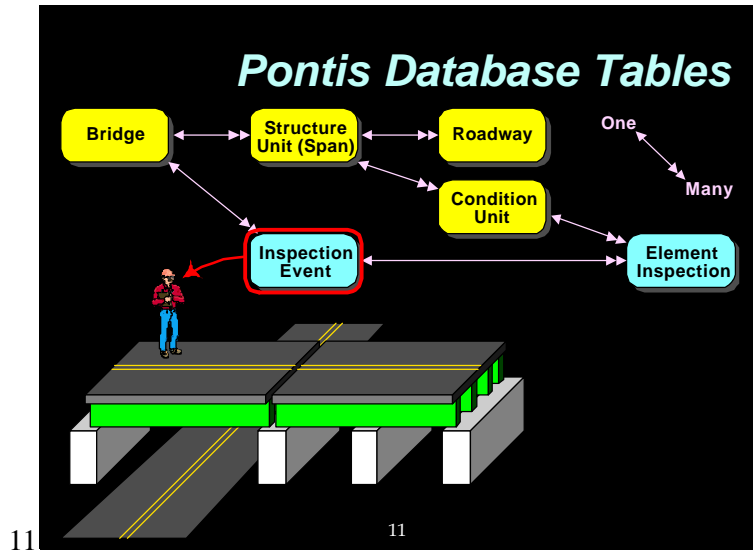
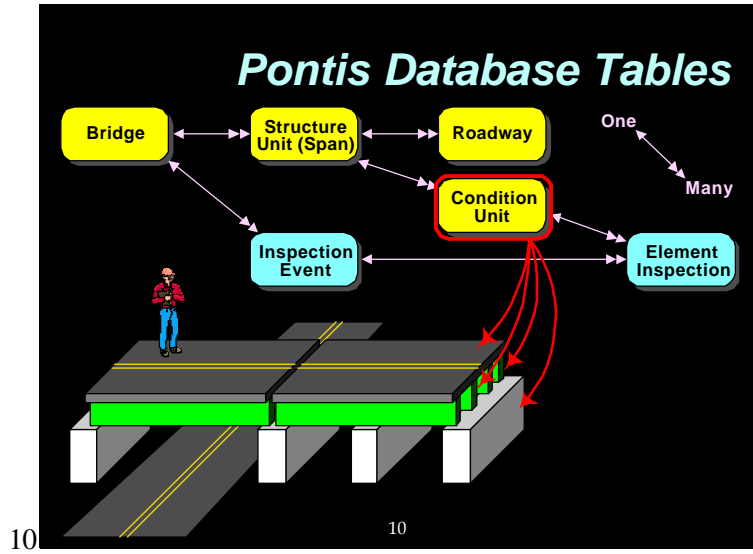
Pontis Database Structure

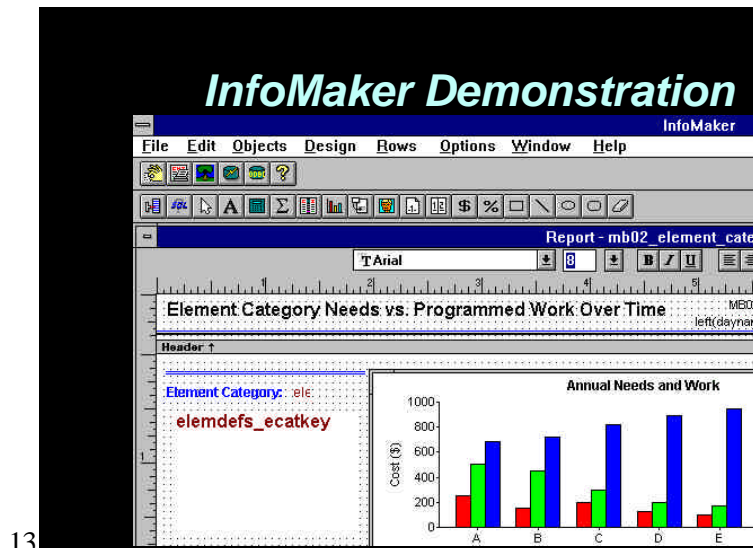


6

6







13



14



15

15